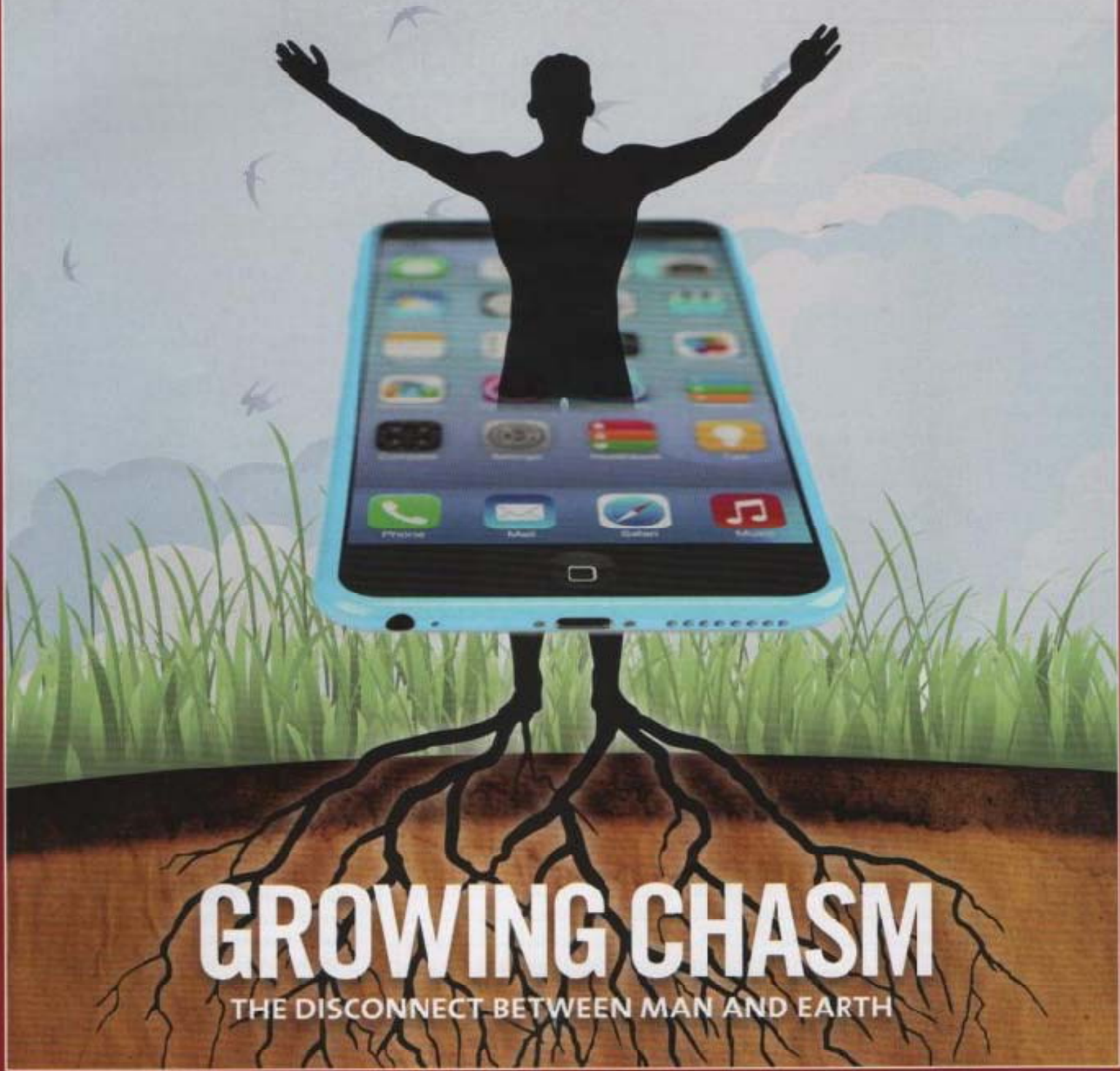


INSIDE: INSIDE THE FARMERS' MIND • THE BETTER PART • BRIDGE BETWEEN CULTURES COLLEGE

WORLD MISSION

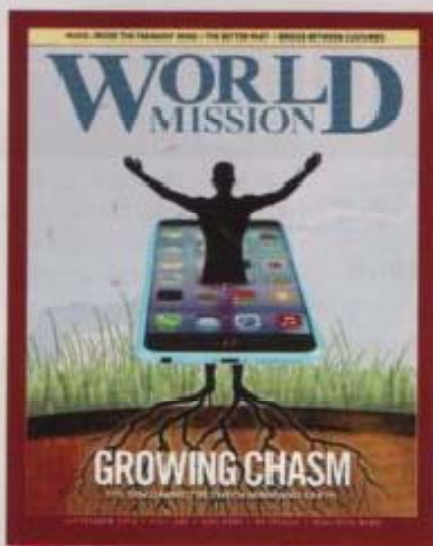
BRIDGE BETWEEN CULTURES COLLEGE
RESERVE LIBRARY
SEP-5 2014



GROWING CHASM

THE DISCONNECT BETWEEN MAN AND EARTH

SEPTEMBER 2014 • NO. 281 • VOL XXVI • 50 PESOS • ISSN 0116-8142



THE PROMISED LAND

One of the blunt injustices in the Philippines, and in many other countries, is the shocking contrast between the few who amass vast areas of land and the poor farmers often deprived of their own survival. According to the Food and Agriculture Organization (FAO) of the United Nations, up to a quarter of the world's population is estimated to be landless, including 200 million people living in rural areas. Failed agrarian reform programs, the greed of several landowners, the false promises made by politicians, and the many difficulties encountered by those who advocate the fair distribution of lands, have culminated in a mere notion of a "promised land" to the poor farmers. These have not only impoverished the farmers and crushed the hopes and dreams of their families, but have threatened the food security of the country as well. Land constitutes the main asset from which the rural poor are able to derive a livelihood. Thus, access to land is important for development and poverty reduction.

06 | WORLD TOUCH

11 | FRONTIERS

Shouting into the silence

BY FR. SHAY CULLEN, MSSC

12 | PERSPECTIVE |

CHINA ON THE MOVE

Moving people, moving the faith

BY XIE LAOSHI, CONTRIBUTOR

28 | INSIGHT |

RESILIENCE: UNTIL WHEN?

Eradicating poverty: Is it possible?

BY HENRYLITO D. TACIO, JOURNALIST

32 | SPIRITUAL REFLECTION |

PATHS TO CONTEMPLATION

The better part

BY FR. LORENZO CARRARO, MCCJ



34 | MISSIONARY VOCATION |

LÉOPOLD SÉDAR SENGHOR

Bridge between cultures

BY FR. LORENZO CARRARO, MCCJ

38 | THE LAST WORD

Lydia's house, Europe's first church

BY FR. SILVANO FAUSTI, SJ

IN FOCUS | THE GROWING CHASM

BY LEONARD POLLARA, ORGANIC SAGE CONSULTING



16 | THE DISCONNECT BETWEEN MAN AND EARTH

WM SPECIAL | RIGHT TO LAND

BY KRIS BAYOS, JOURNALIST



22 | THE STILL-BEING-PROMISED LAND



26 | INSIDE THE FARMERS' MIND

WORLD MISSION has the exclusive services of the following magazines for Asia: ALÉM-MAR (Portugal); MUNDO NEGRO (Spain); NIGRIZIA (Italy); NEW PEOPLE (Kenya); WORLDWIDE (South Africa); AFRIQUESPOIR (DR of Congo); ESQUILA MISIONAL (Mexico); MISION SIN FRONTERAS (Peru); and IGLESIA SINFRONTERAS (Colombia).